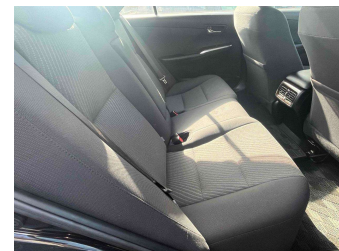
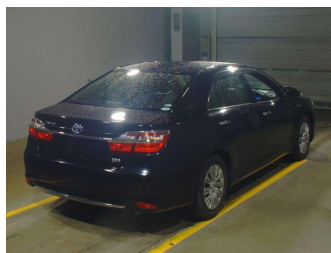
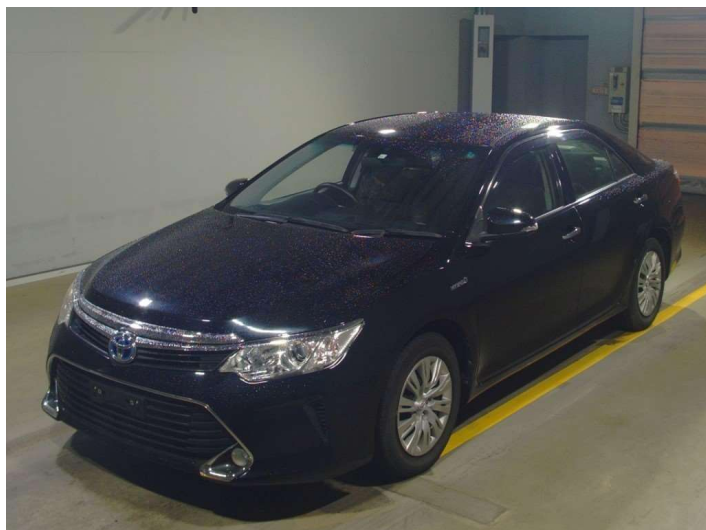


2015 Toyota Camry HYBRID, FACELIFT, BLUETOOTH,




Purchase Price **\$20,895**

Includes GST
Excludes on-road costs of \$595

Finance may be available on this vehicle. Ask one of our friendly staff for more information.

Gain peace of mind with Mechanical Breakdown Insurance. **Ask us how.**

- Top features**
- » ABS brakes
 - » Air Conditioning
 - » CD Player
 - » Central Locking
 - » Climate Control
 - » Driver airbag
 - » Factory CD(s)
 - » Passenger airbag
 - » Power steering

Body Style	Reg No.
4 door, Sedan	-
Odometer	Ext Colour
27,400 km	Black
Engine	History
2500 cc, Hybrid	-
Fuel Type	Seats
Hybrid	5 seats
Transmission	CO2 Emissions
Auto	★★★★☆
Wheels	121 grams/km
-	Energy Economy
VIN	★★★★☆☆
-	Annual fuel cost of \$2,040
Interior	5.2L per 100km
Black	Cost per year is an estimate based on petrol price of \$2.80 per litre and an average distance of 14000 km. Emissions and Energy Economy figures standardised to 3P WLTP.
Safety	Stock ID: 4450
	
Based on 2023 UCSR rating for 11-17 models	



V Do Motors | Phone 09 6360058 | Email sales@vdomotors.co.nz
33, Alfred St, Onehunga, Auckland 1061, New Zealand
www.vdomotors.co.nz